



ELEVATION
— PARK MODEL COMPANY —





**ELEVATION**
— PARK MODEL COMPANY —

We look forward to pushing the boundaries of what's possible in a Park Model



Built to a higher standard

Elevation Park Model Company was born out of a need in the market for a new manufacturer with a different way of doing things. Seeing a growing demand for Park Model RVs across the country, and a shortage of product on dealers' lots, Brent Kattau and Joel Lederman decided to venture out on their own. With over 25 years of combined experience, they have covered many positions including parts, customer service, engineering, purchasing, and sales. Both were heavily involved in the innovation and design process for an established manufacturer. In the fall of 2021, they started construction of a 65,000 square foot modern production facility in Elkhart, Indiana and began assembling a group of well-established dealers to partner with.

Elevation's goal is to combine a passion for uplifting people to reach their potential, creating a team atmosphere where everyone feels valued, and a commitment to building the best quality product on the market. We look forward to pushing the boundaries of what's possible in a Park Model, providing a great experience for customers, an honest relationship with dealers, and family environment for our employees for many years to come!

Two handwritten signatures in black ink. The signature on the left is "Brent Kattau" and the signature on the right is "Joel Lederman".





LEFT:

5-113 Kitchen shown in Natural stain cabinets, black countertops & black hardware. Shown with optional Roasted Mocha linoleum, black farmhouse apron sink, Industrial faucet & Salinas Oak ceiling.

RIGHT:

5-113 Bathroom w/ corner shower





ELEVATION
PARK MODEL COMPANY

COFFEE



LEFT:
5-101 Kitchen & Hutch in Slate Stain cabinets and Bello Romano countertops. Shown with optional Russo linoleum, Stainless Steel appliances, Stainless Steel farmhouse apron sink, Industrial faucet, and crown molding.

RIGHT:
5-101 Bedroom w/ optional reclaimed wood feature wall.





ELEVATION
PARK MODEL COMPANY

Fridge
Ice Maker
Lock
Water
Crushed
Cubed
Light
Freezer
Door Alarm

cooli

coffee

tea

cooli



LEFT:
5-107 Front Kitchen w/ Harbor Grey painted cabinets. Shown w/
optional Solid Surface countertops & backsplash, Stainless Steel
appliances w/ French door fridge, and crown molding.

RIGHT:
5-107 Bedroom w/ optional Driftwood Shiplap feature wall.





ELEVATION
PARK MODEL COMPANY

OPEN

OPEN





LEFT:
5-102 (Non-loft) Kitchen w/ White painted cabinets, black countertops & black hardware. Shown w/ optional Moth Grey linoleum, Black farmhouse apron sink, Industrial faucet, & Slate appliances.



RIGHT:
5-102 (Non-loft) Bedroom w/ optional Black shiplap feature wall

BELOW:
5-102 (Non-loft) Front Fireplace w/ optional full height Black Shiplap.



LEFT:

Optional Nautical Blue bathroom cabinets w/ solid surface countertops & backsplash. Shown with Dark Ash linoleum.

RIGHT:

Optional Piano Black bathroom cabinets & open shelves w/ Sumner Oak countertops.

5 Series Standard Features

CONSTRUCTION

- Architectural Shingles – 40 Year Warranty
- 7/16" OSB Roof Decking w/ Ice & Weather shield
- 2x6 Perimeter Fascia
- Engineered Truss Rafters 16" o.c.
- Fixed Side Overhangs
- Woven Poly Underbelly
- Vinyl Siding w/50 Year Warranty
- Fiberglass Insulation: R-11 Sidewalls, R-22 Floors, & R-33 Roof
- Weather resistant Thermo-Sheathing
- Metal Strapping Connecting Sidewalls to Floor
- 2x4 Sidewall Studs 16" o.c.
- 10" Steel I-Beam Frame
- 2x6 Floor joists 16" o.c.
- Floor ductwork w/ perimeter registers
- 5/8" Decking w/ water sealant
- 6' Vinyl Patio Door w/ Argon
- Customer selected front end window configuration
- Vinyl Thermopane Windows w/ Argon
- Shed Dormers Entire Length
- Removable Hitch
- Metal Hurricane Straps

STANDARD FEATURES

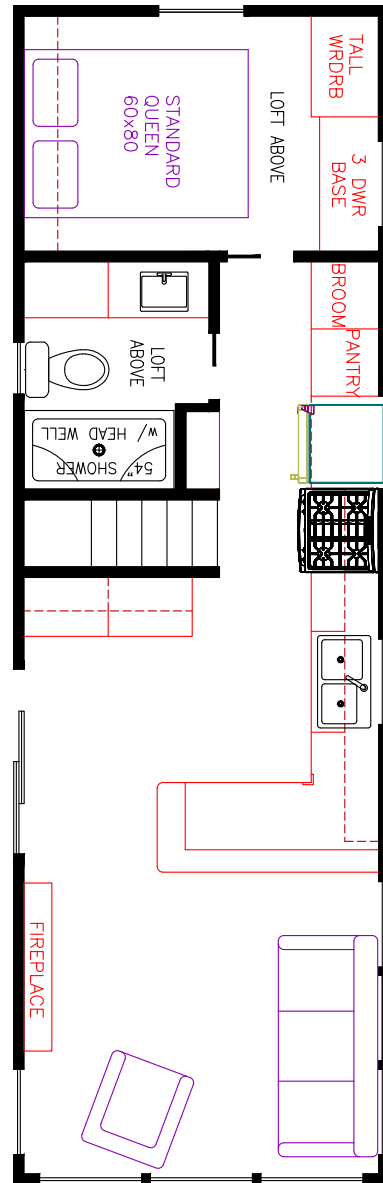
- 50 Amp Electrical cord (36')
- Prep for Central Air
- Suburban 42,000 BTU Furnace
- 20-gallon electric W/H w/ lighted switch
- 18' GE Refrigerator w/ top freezer – Black
- 30" GE Gas Range – Black
- 30" Over the Range Microwave – Black
- Stainless Steel Deep Kitchen Sink
- Pull down spray kitchen faucet
- Island w/ Bar Stools or Table w/ Chairs
- Black, Brushed Nickel, or Gold Hardware
- Kitchen Island Pendant Lights
- LED lights under Kitchen Cabinets
- Custom high-end residential cabinetry
- Baseboard Moulding throughout
- Toe Kicks in Cabinetry
- Raised Panel Interior Doors
- Cordless 2" Blinds
- LED can lights throughout
- Ceiling Fan w/Light – LR (BRM non loft only)
- 60 x 80 Standard Queen premium mattress
- 2 Night Stands in Bedroom
- Master BRM hanging wardrobe w/ drawer bank
- Recliner Chair
- Hide a bed sofa
- Fiberglass Tub or Shower w/ fiberglass headwell
- Single Lever Bathroom Faucet
- Stainless Steel Bathroom Sink
- Residential House Toilet
- Power bathroom vent
- TV Jack in LR, BRM & Loft
- 43" LG Smart TV
- USB outlets in Kitchen, Bedroom, & Loft
- Porch Lights by Each Door
- Exterior 110 GFI outlet
- Fire Extinguisher
- Smoke & CO2 Detector



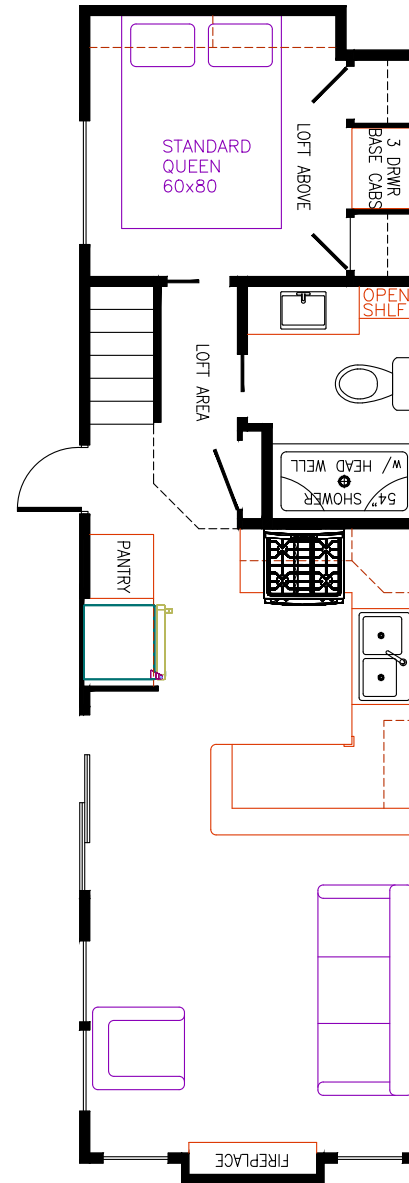
Floor plans

Elevation floorplans have been engineered to utilize the maximum 400 square feet in the most efficient way possible. Each Park Model can be built as a single, double, or non-loft, also giving the option of a straight or drop frame. Customers have the ability to choose between five front-end window designs, multiple bathroom layouts, and different wardrobe options, which are interchangeable in each floorplan. Many plans can accommodate amenities such as washer & dryer, dishwasher, larger refrigerator, or sectional sofa. Depending on the location of the unit, customers can select to have the floorplan flipped end-to-end or rolled side-to-side to best suit their needs.

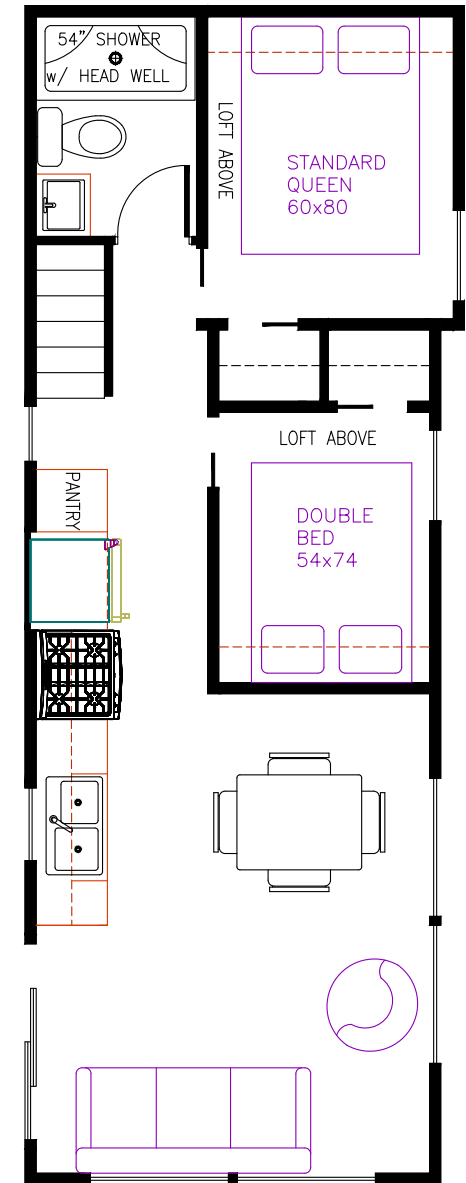
NOTE: All floorplans can also be built as **non-lofts**.



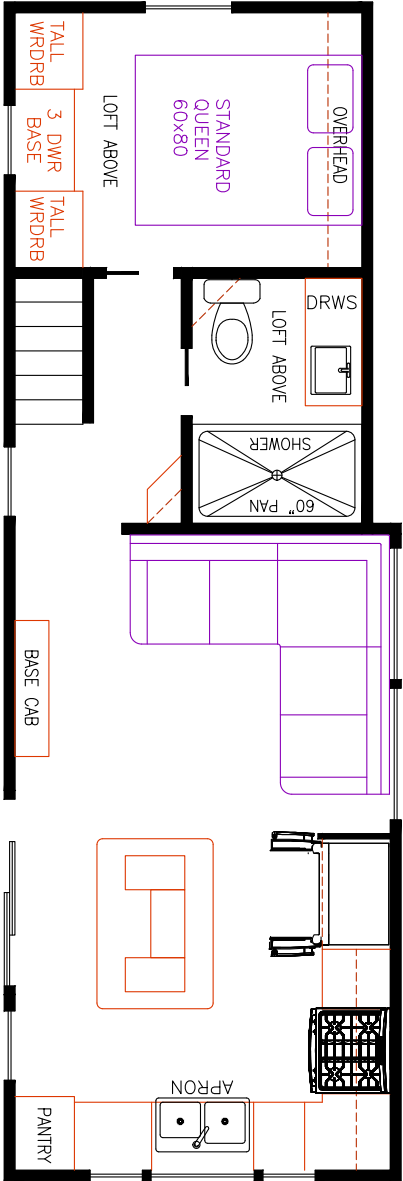
5-101



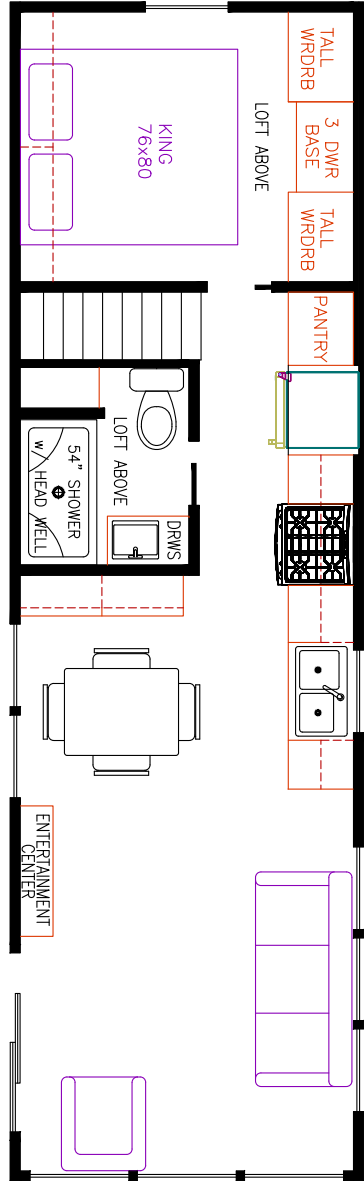
5-103



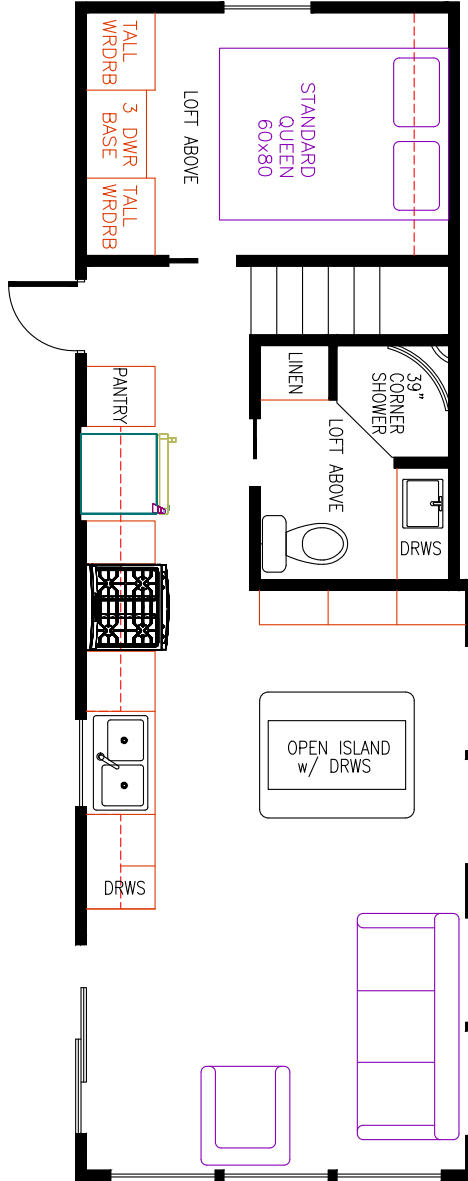
5-105



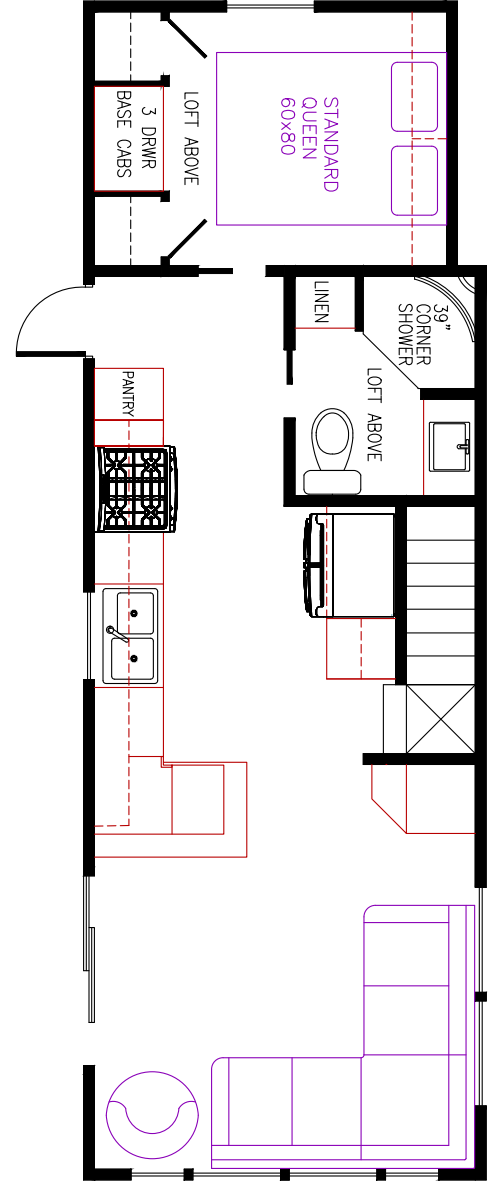
5-107



5-109



5-111



5-113






elevationparkmodels.com



Elevation Park Model Company

756 Patricia Ct.
Elkhart, IN 46516

574.501.3300  



*Products and options are subject to change based on availability.
Units are seasonal and not intended for full-time residence.*